

# AGENDA /

- 5:30 – 6:00** **Arrival & Welcome**
- 6:00 – 6:10** **Subcommittee Follow-Up**  
Rob Johns
- 6:10 – 6:20** **Project Tours**      **Roosevelt HS Observations**  
**Franklin HS Observations**
- 6:20 – 6:50** **Project Update**  
PPS/Bassetti
- 6:50 – 7:00** **Last DAG: Imagery Feedback**
- 7:00 – 7:50** **Site Design Update Activity**  
Mayer/Reed
- 7:50 – 8:00** **Public Comment**

# BENSON POLYTECHNIC H.S. DAG #5 / FEBRUARY 28, 2019

# INTRODUCTIONS



## **PORTLAND PUBLIC SCHOOLS**

Jen Sohm



## **BASSETTI ARCHITECTS**

Lorne McConachie

Joe Echeverri

Betty Lou Poston

Aydin Eهران



## **MAYER/REED**

Carol Mayer-Reed

Anne Samuel

James Voelckers

# SUBCOMMITTEE FOLLOW-UP / ROB JOHNS



# PROJECT TOURS / OBSERVATIONS

# ROOSEVELT HS TOUR





# FRANKLIN HS TOUR



# PROJECT UPDATE / PORTLAND PUBLIC SCHOOLS

# ON-SITE SCENARIOS OVERVIEW

SCENARIO 1 /	NO MPG PROGRAMS ON-SITE
SCENARIO 2A /	ALL MPG PROGRAMS ON-SITE
SCENARIO 2B /	ALL MPG PROGRAMS ON-SITE ADDITIONAL CRS FOR BENSON TECH
SCENARIO 3A /	INTEGRATED MPG PROGRAMS ON-SITE (MAIN BLDG)
SCENARIO 3B /	INTEGRATED MPG PROGRAMS ON-SITE (MAIN BLDG) ADDITIONAL CRS FOR BENSON TECH
SCENARIO 3C /	INTEGRATED MPG PROGRAMS ON-SITE (LOWER LEVEL)
SCENARIO 3D /	INTEGRATED MPG PROGRAMS ON-SITE (LOWER LEVEL) ADDITIONAL CRS FOR BENSON TECH
SCENARIO 4A /	INTEGRATED MPG PROGRAMS ON-SITE (MAIN BLDG), INDEPENDENT SCHOOLS ON ADJACENT PARKING SITE
SCENARIO 4B /	INTEGRATED MPG PROGRAMS ON-SITE (MAIN BLDG), INDEPENDENT SCHOOLS ON ADJACENT PARKING SITE ADDITIONAL CRS FOR BENSON TECH
SCENARIO 4C /	INTEGRATED MPG PROGRAMS ON-SITE (LOWER LEVEL), INDEPENDENT SCHOOLS ON ADJACENT PARKING SITE
SCENARIO 4D /	INTEGRATED MPG PROGRAMS ON-SITE (LOWER LEVEL), INDEPENDENT SCHOOLS ON ADJACENT PARKING SITE ADDITIONAL CRS FOR BENSON TECH

# MPG SCENARIOS / SUMMARY

## BENSON TECH MASTER PLAN BOARD RESOLUTION PROVISIONS

	1	2A	2B	3A	3B	3C	3D	4A	4B	4C	4D
Building size reduction (about 3,500 SF)	☐					☐					
Space for future visual & performing arts program	●			●	●			●	●		
ADA/Code compliant access to Buckman Fields	●	●	●	●	●	●	●	●	●	●	●
PROGRAMS INCLUDED ON-SITE:											
Virtual Scholars		✓	✓	✓	✓	✓	✓	✓	✓	✓	✓
Night/Summer School Offices		✓	✓	✓	✓	✓	✓	✓	✓	✓	✓
PISA		✓	✓	✓	✓	✓	✓	✓	✓	✓	✓
Pioneer High School		✓	✓	✓	✓	✓	✓	✓	✓	✓	✓
DART/Clinton School		✓	✓					✓	✓	✓	✓
Alliance at Benson and Reconnection		✓	✓					✓	✓	✓	✓

## IMPACTS TO APPROVED MASTER PLAN

	1	2A	2B	3A	3B	3C	3D	4A	4B	4C	4D
Approximate additional cost to project		\$	\$\$	\$	\$\$		\$\$	\$\$\$	\$\$\$\$	\$\$\$	\$\$\$\$
Adaptive re-use of upper Auditorium balcony		●	●								
Requires off-site/alternative location(s) for MPG	●			●	●	●	●				
Reduces Benson Tech CTE space		●	●			●	●			●	●
# of fewer teaching stations for Benson Tech	0	- 12	- 6	- 6	0	- 6	0	- 6	0	- 6	0
Approx. Benson capacity reduction from 1,700	0	- 300	- 150	- 150	0	- 150	0	- 150	0	- 150	0
MPG in lower level, adequate but not ideal		●	●			●	●			●	●
Displacement of Benson Tech freshman academy		●	●	●	●			●	●		
Reduced Benson Tech storage		●	●			●	●			●	●
Reduced parking capacity								●	●	●	●

# SCENARIO 4B / BENSON TECH AND INTEGRATED MPG PROGRAMS ON-SITE, ADDITIONAL CRS INDEPENDENT SCHOOLS ON ADJACENT PARKING SITE

## BOARD RESOLUTION PROVISIONS INCLUDED

- + Space for future visual & performing arts program
- + ADA/Code compliant access to Buckman Fields
- + All programs and program spaces included:
  - + Benson Tech: 1,700 design capacity
  - + Virtual Scholars
  - + Night/Summer School Offices
  - + PISA
  - + Pioneer High School

## IMPACTS TO APPROVED MASTER PLAN

- + Additional \$\$\$\$ beyond approved budget
- + Changes to Master Plan in affected areas: Main building second floor
- + Assignment of “unassigned CTE space” would need to be determined
- + No fewer teaching stations for Benson Tech
- + Independent schools: Alliance and Reconnection Services, DART/Clinton School on adjacent parking site
- + Freshman academy for Benson Tech would need to be relocated or dispersed
- + Reduced parking capacity

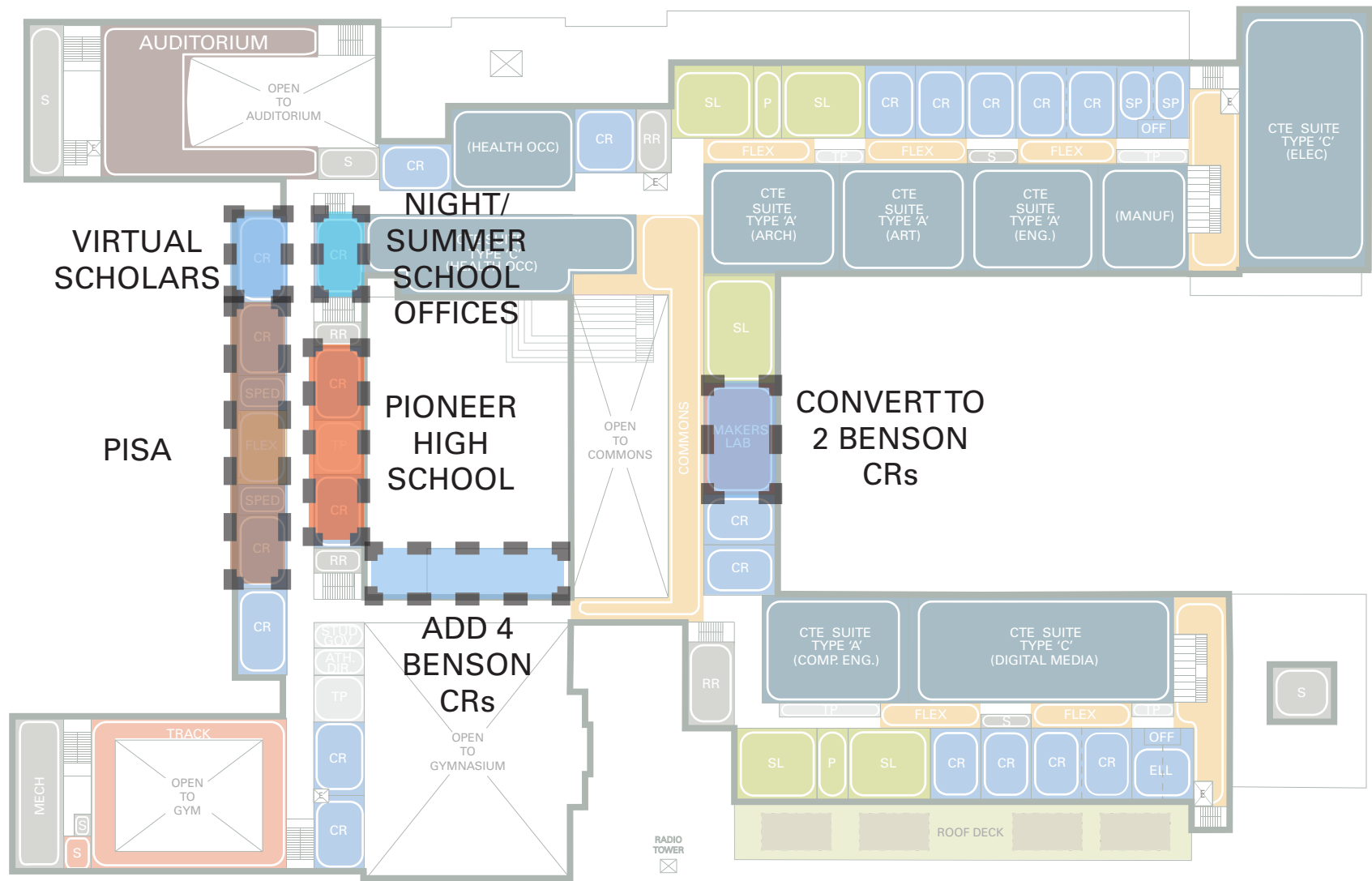


# SCENARIO 4B / SITE PLAN





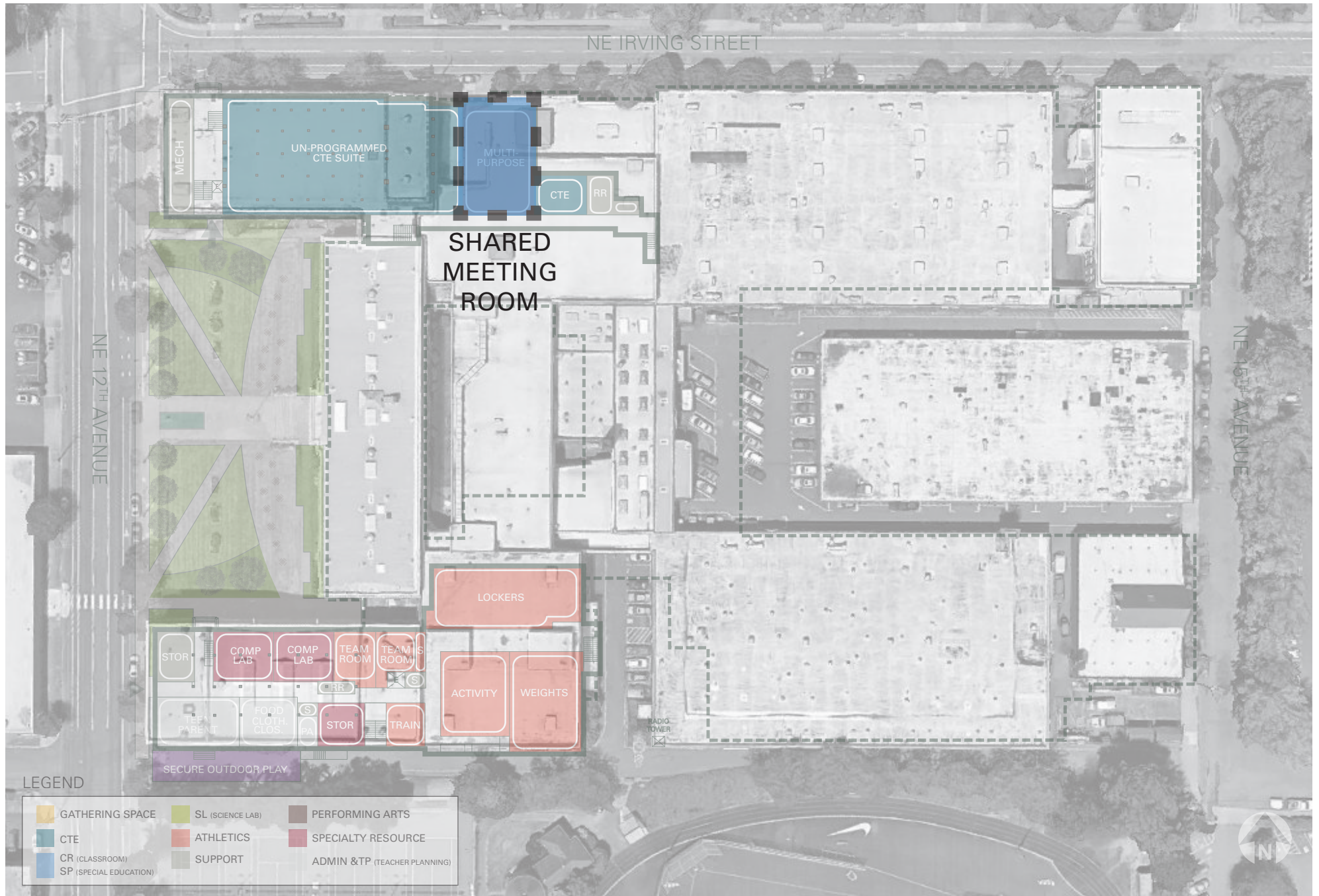
# SCENARIO 4B / UPPER LEVEL



## LEGEND

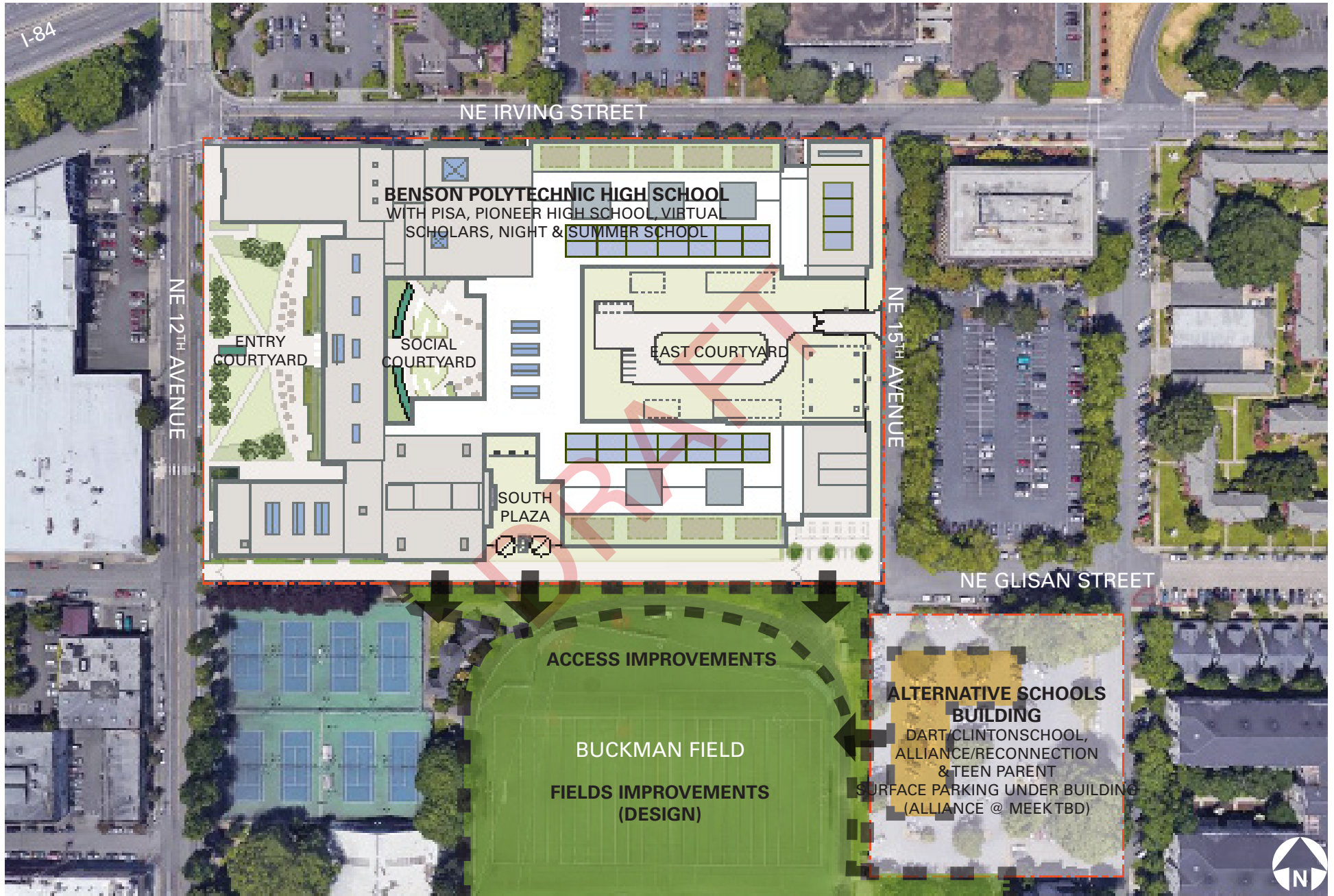
<span style="background-color: #f9c94d; border: 1px solid black; display: inline-block; width: 15px; height: 10px;"></span> GATHERING SPACE	<span style="background-color: #c9e0c9; border: 1px solid black; display: inline-block; width: 15px; height: 10px;"></span> SL (SCIENCE LAB)	<span style="background-color: #808080; border: 1px solid black; display: inline-block; width: 15px; height: 10px;"></span> PERFORMING ARTS
<span style="background-color: #4682b4; border: 1px solid black; display: inline-block; width: 15px; height: 10px;"></span> CTE	<span style="background-color: #ff6347; border: 1px solid black; display: inline-block; width: 15px; height: 10px;"></span> ATHLETICS	<span style="background-color: #d2691e; border: 1px solid black; display: inline-block; width: 15px; height: 10px;"></span> SPECIALTY RESOURCE
<span style="background-color: #6495ed; border: 1px solid black; display: inline-block; width: 15px; height: 10px;"></span> CR (CLASSROOM)	<span style="background-color: #a9a9a9; border: 1px solid black; display: inline-block; width: 15px; height: 10px;"></span> SUPPORT	<span style="background-color: #d3d3d3; border: 1px solid black; display: inline-block; width: 15px; height: 10px;"></span> ADMIN & TP (TEACHER PLANNING)
<span style="background-color: #6495ed; border: 1px solid black; display: inline-block; width: 15px; height: 10px;"></span> SP (SPECIAL EDUCATION)		

# SCENARIO 4B / LOWER LEVEL



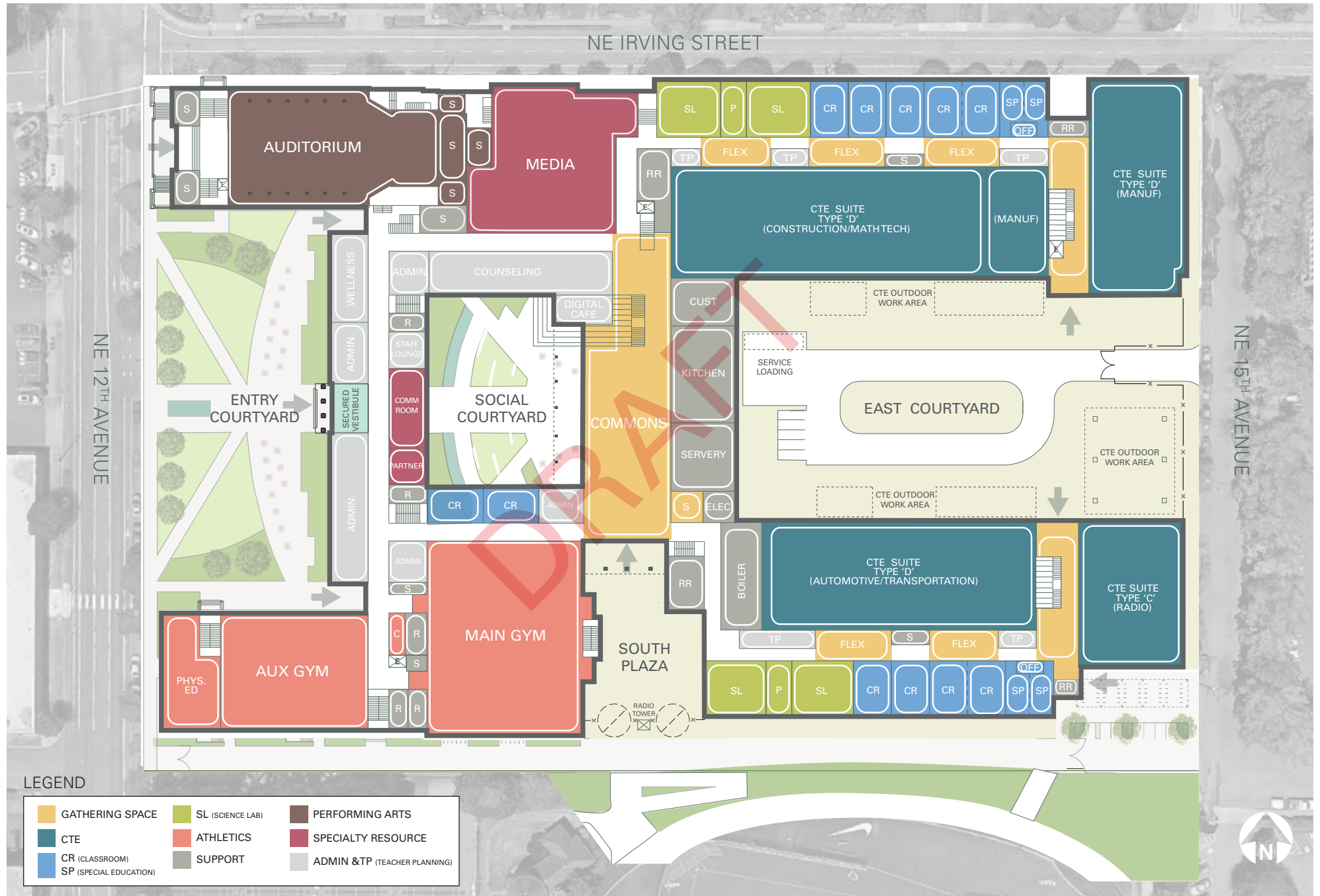
# MASTER PLAN UPDATE / BASSETTI ARCHITECTS

# UPDATED SITE PLAN

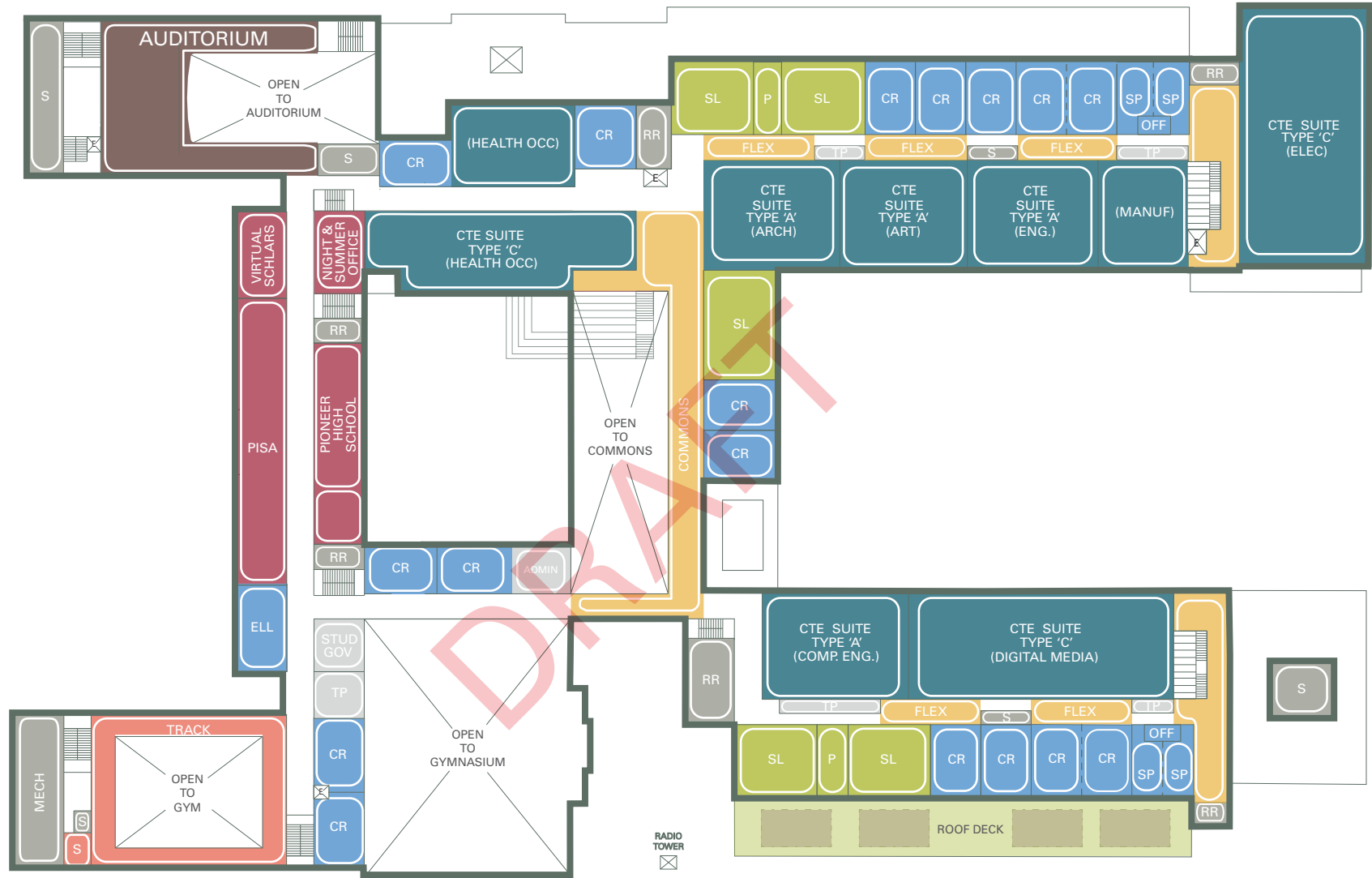




# UPDATED MASTER PLAN / MAIN LEVEL



# UPDATED MASTER PLAN / UPPER LEVEL

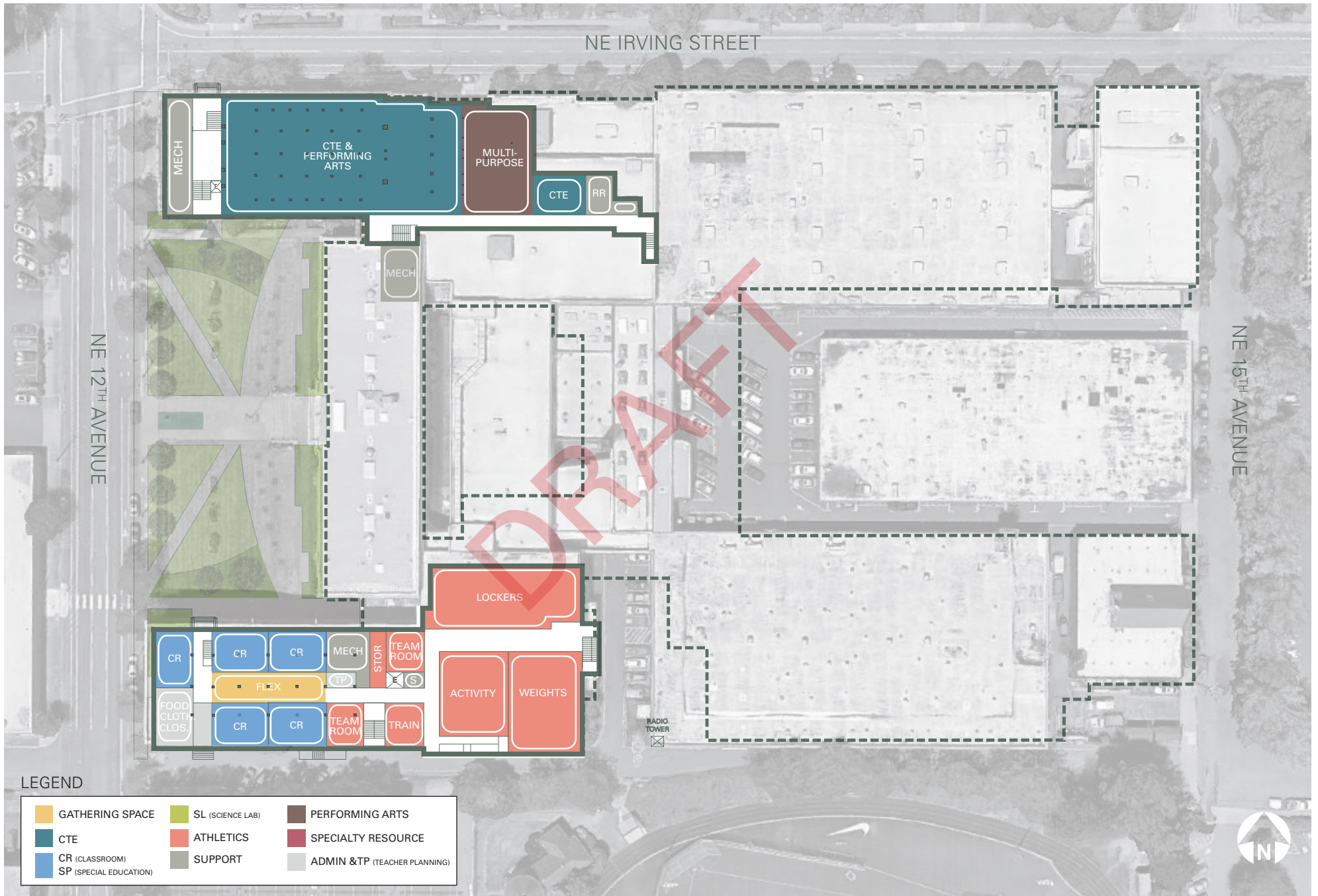


## LEGEND

<span style="background-color: #FFD700; border: 1px solid black; display: inline-block; width: 15px; height: 10px;"></span> GATHERING SPACE	<span style="background-color: #90EE90; border: 1px solid black; display: inline-block; width: 15px; height: 10px;"></span> SL (SCIENCE LAB)	<span style="background-color: #8B4513; border: 1px solid black; display: inline-block; width: 15px; height: 10px;"></span> PERFORMING ARTS
<span style="background-color: #008080; border: 1px solid black; display: inline-block; width: 15px; height: 10px;"></span> CTE	<span style="background-color: #FF4500; border: 1px solid black; display: inline-block; width: 15px; height: 10px;"></span> ATHLETICS	<span style="background-color: #DC143C; border: 1px solid black; display: inline-block; width: 15px; height: 10px;"></span> SPECIALTY RESOURCE
<span style="background-color: #66B3FF; border: 1px solid black; display: inline-block; width: 15px; height: 10px;"></span> CR (CLASSROOM)	<span style="background-color: #A9A9A9; border: 1px solid black; display: inline-block; width: 15px; height: 10px;"></span> SUPPORT	<span style="background-color: #D3D3D3; border: 1px solid black; display: inline-block; width: 15px; height: 10px;"></span> ADMIN & TP (TEACHER PLANNING)
<span style="background-color: #ADD8E6; border: 1px solid black; display: inline-block; width: 15px; height: 10px;"></span> SP (SPECIAL EDUCATION)		



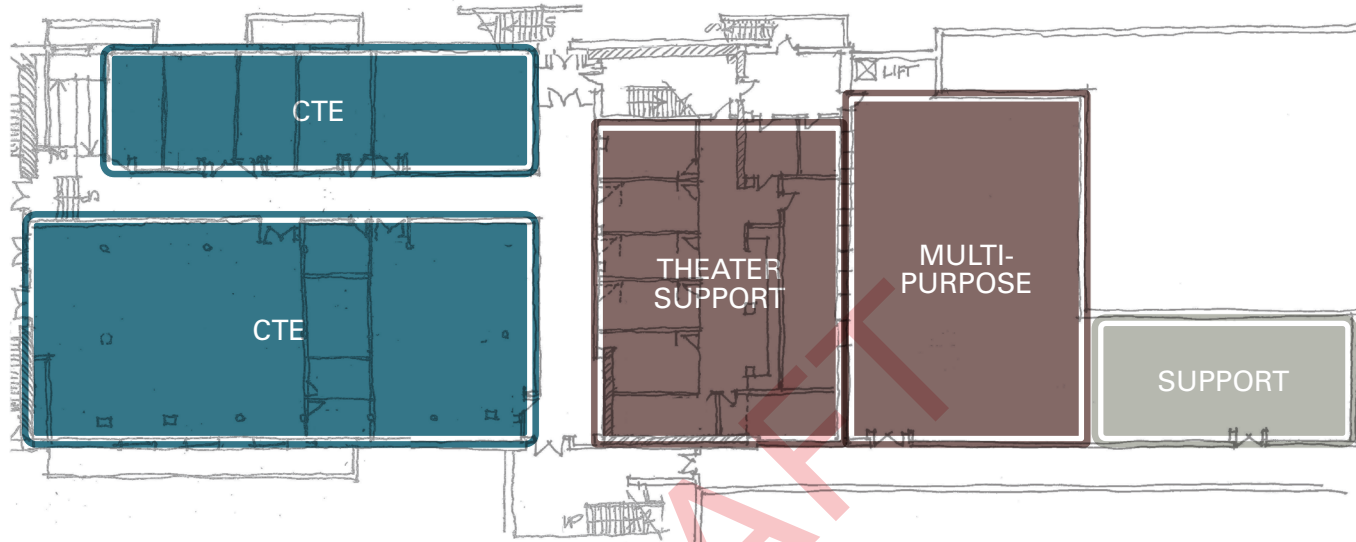
# UPDATED MASTER PLAN / LOWER LEVEL



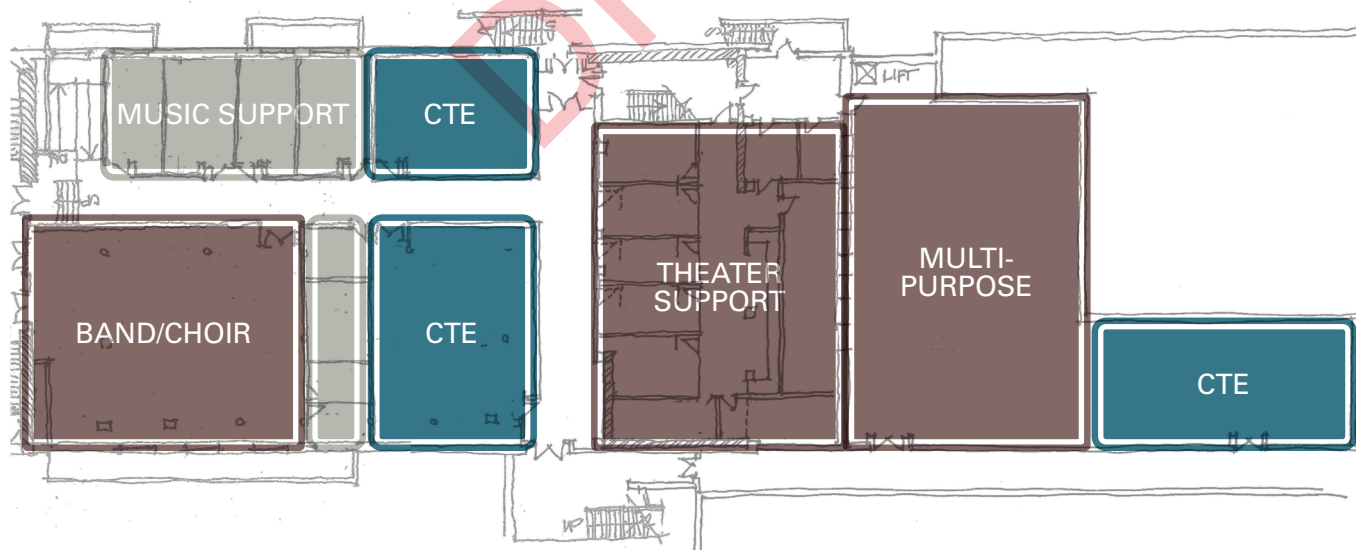


# UPDATED MASTER PLAN / AUDITORIUM LOWER LEVEL SCHEMES

## CTE FOCUS SCHEME



## CTE & MUSIC SCHEME\*



\*THIS SCHEME REFLECTED IN REVISED AREA PROGRAM



# FEEDBACK / QUESTIONS

# LAST DAG / IMAGERY FEEDBACK

# IMAGERY / MULTI-USE & FLEXIBLE SPACES









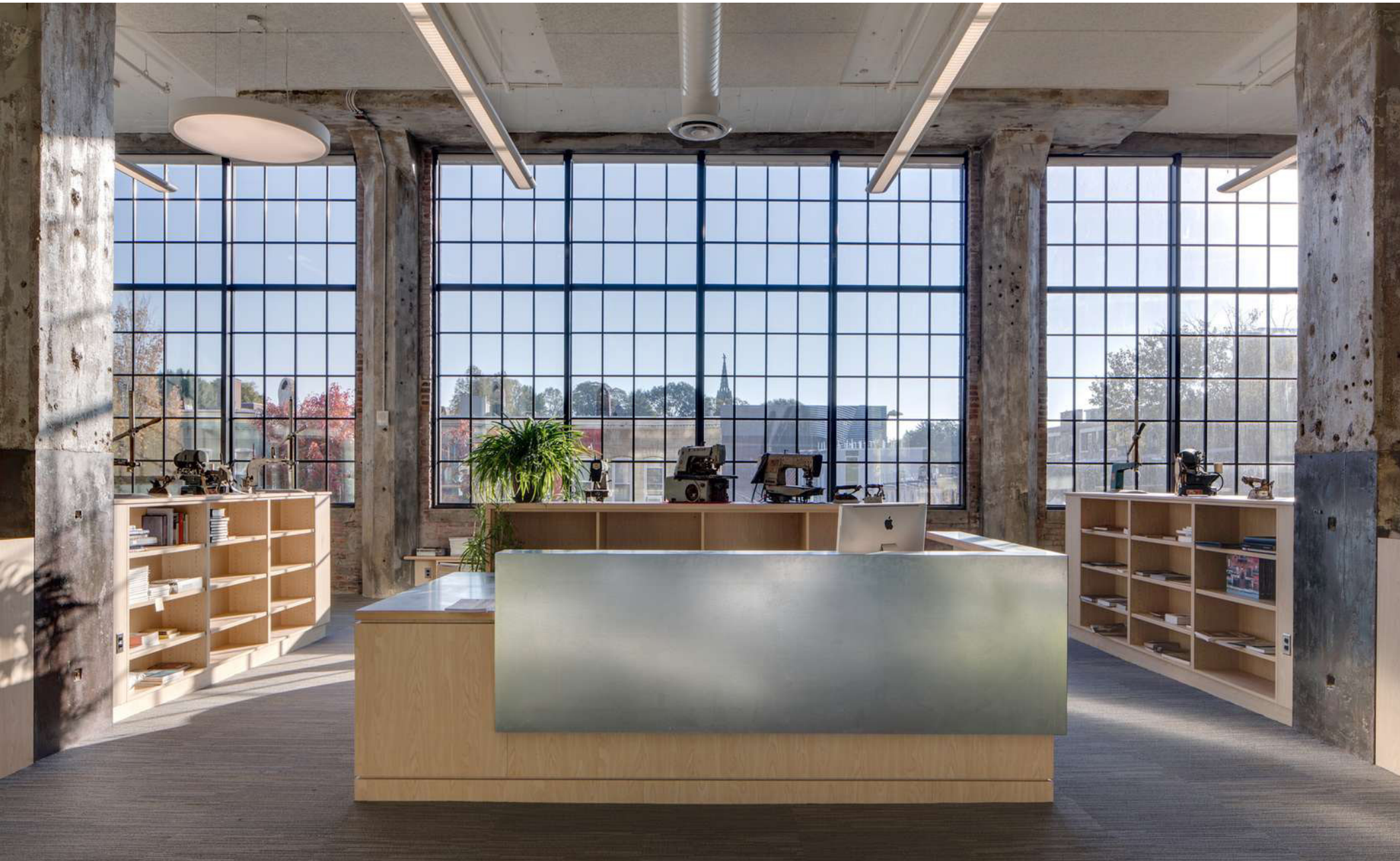
# IMAGERY / MULTI-USE & FLEXIBLE SPACES







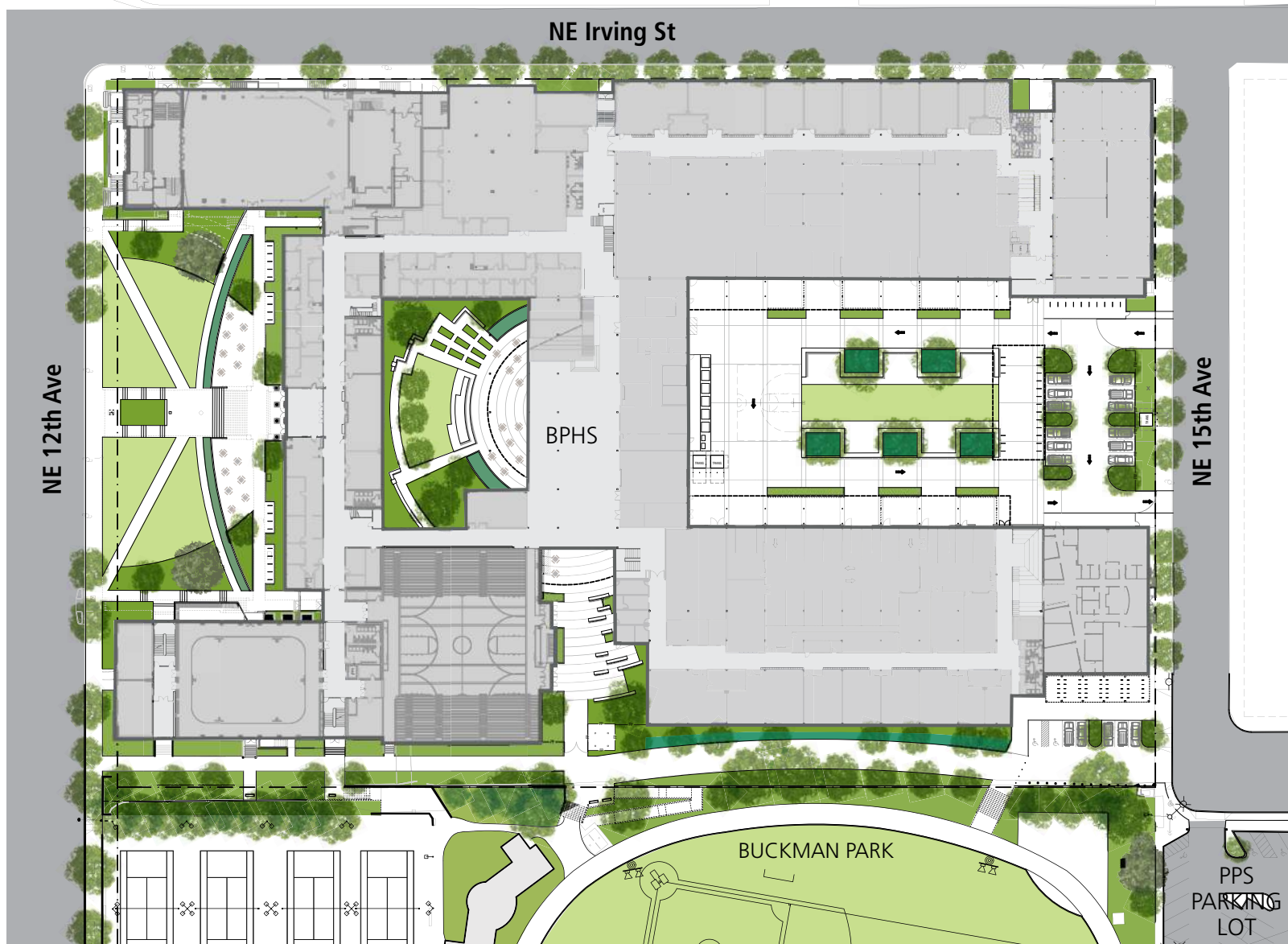




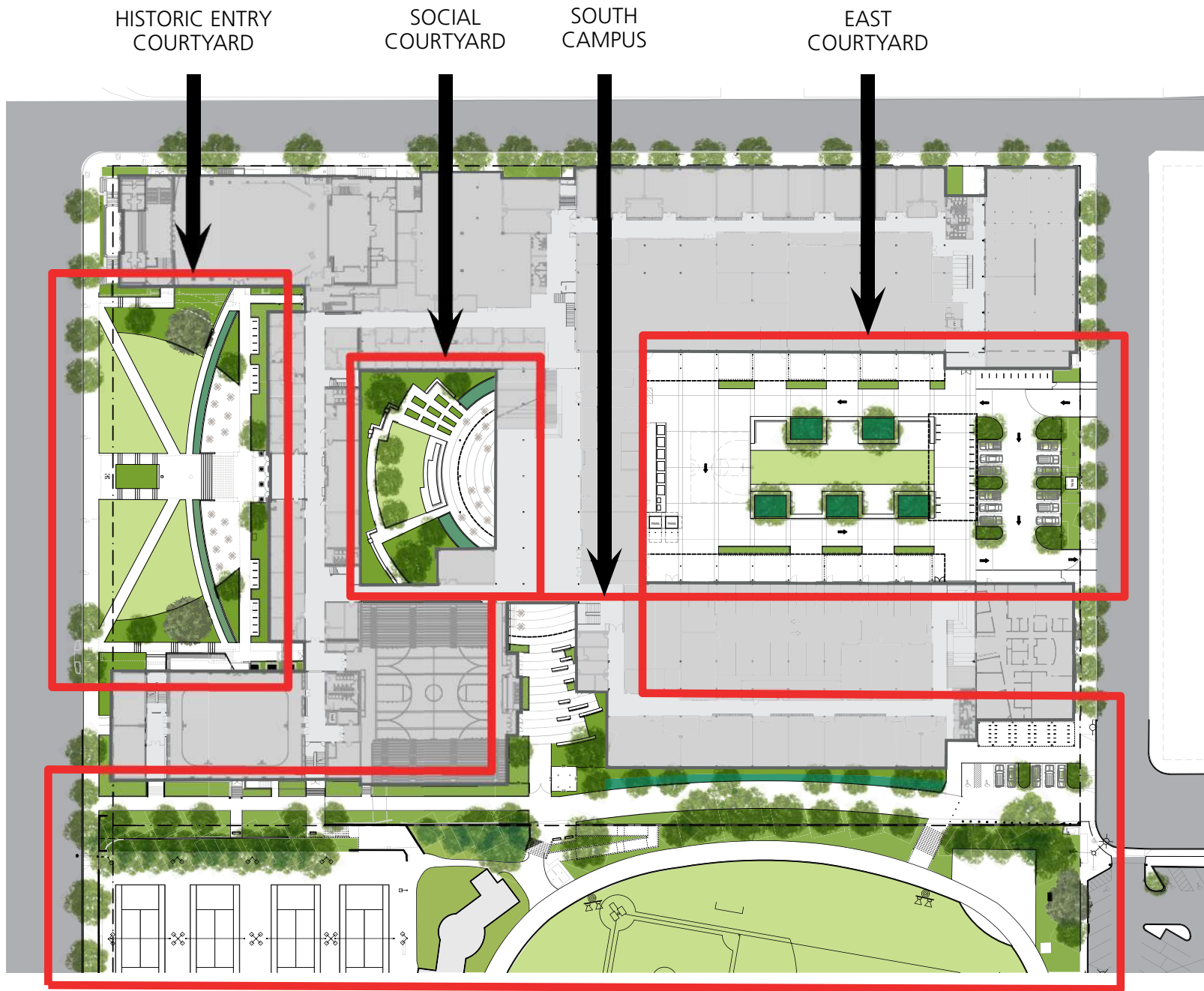
# SITE DESIGN UPDATE / MAYER / REED



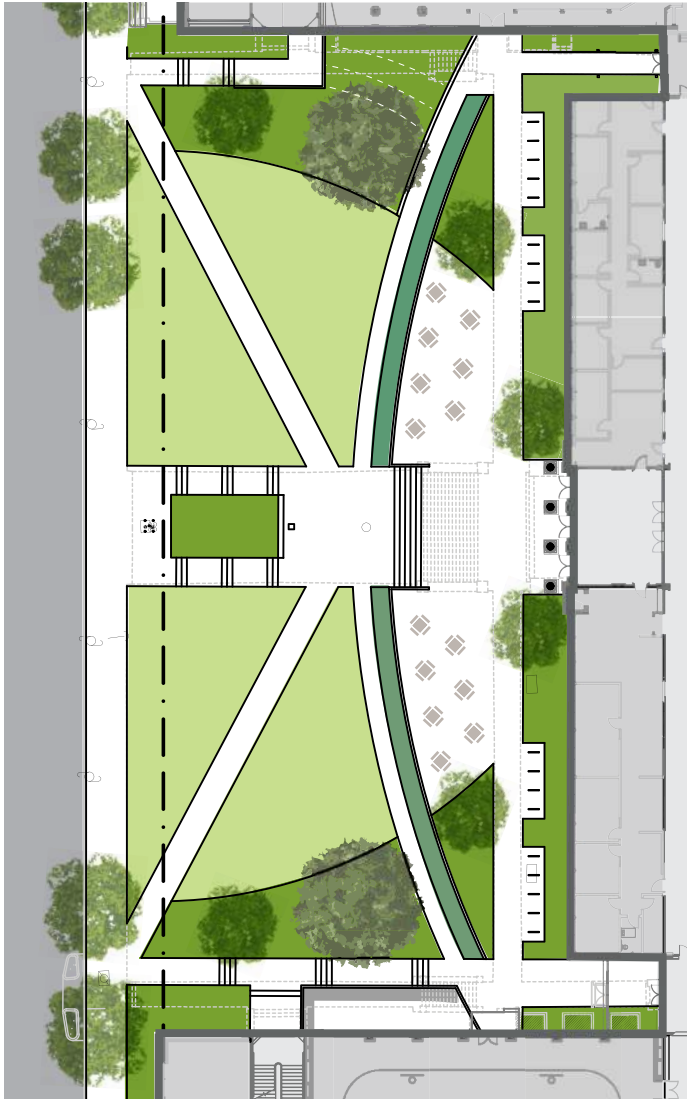
# SITE / OVERALL PLAN



# SITE / ZONES



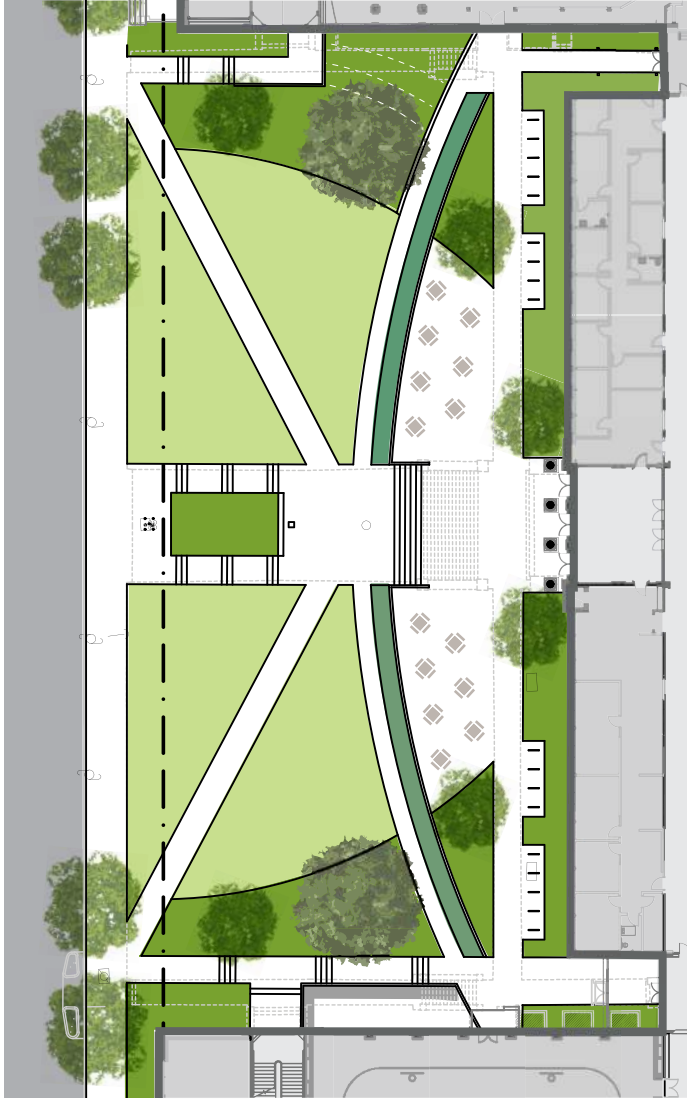
# HISTORIC FRONT ENTRY / GUIDING PRINCIPLES



## APPLICABLE GUIDING PRINCIPLES

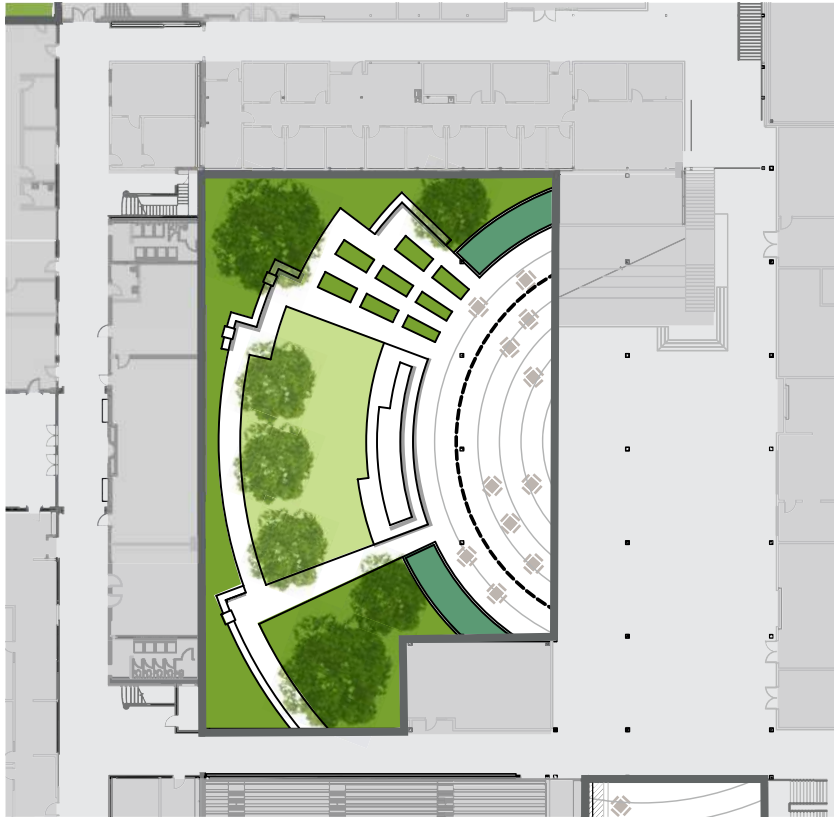
- + Honor the unique history and culture of Benson Polytechnic High School.
- + Provide learning environments that inspire creativity and collaboration among students.
- + Celebrate diversity and provide a sense of inclusion and belonging among students and families.

# HISTORIC FRONT ENTRY / PROGRAMMING



YOUR INPUT :: DAG #3

- + Strong support for the reinstallation of the Benson Bubbler, the roses, the plaques and benches
- + View of main facade is very important, keep open site lines from the street
- + Support for period appropriate design aesthetic
- + Support for proposed pedestrian circulation and larger upper plaza
- + Interest in more dispersed seating - not all in the upper plaza
- + Support for rainwater / stormwater treatment being incorporated into the space
- + Could student gardening / maintenance take place here?

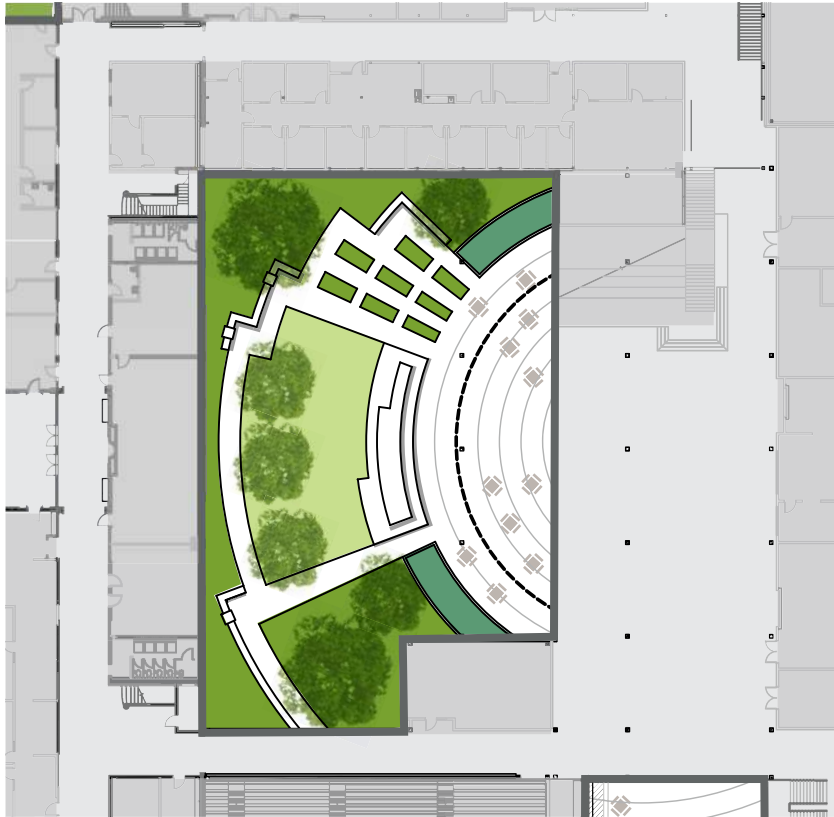


## APPLICABLE GUIDING PRINCIPLES

- + Honor the unique history and culture of Benson Polytechnic High School
- + Provide learning environments that inspire creativity and collaboration among students
- + Provide agile, flexible, and adaptable facilities that support changing education and industry needs
- + Provide hands-on, project-based learning opportunities that are imbued with rigor and relevancy
- + Provide learning environments that inspire creativity and collaboration among students
- + Celebrate diversity and provide a sense of inclusion and belonging among students and families



## SOCIAL COURTYARD / PROGRAMMING



YOUR INPUT :: DAG #3

- + Support for a connection, at minimum visual though physical preferred, from front lobby
- + Strong support for a covered area
- + Concern over the close adjacency of counseling services (private, needs to be screened) and outdoor use space. Also lack of views into courtyard from north edge.
- + Support for a central dais / stadium steps that can be used from many directions
- + Concern about higher maintenance needs of shrub areas
- + Dislike of synthetic turf as it is not a natural material
- + Minimize hidden areas (SE corner)
- + Maintain clear site lines throughout - low shrubs, limb up trees

# SOUTH CAMPUS / GUIDING PRINCIPLES

## APPLICABLE GUIDING PRINCIPLES

- + Honor the unique history and culture of Benson Polytechnic High School.
- + Provide learning environments that inspire creativity and collaboration among students.
- + Provide agile, flexible, and adaptable facilities that support changing education and industry needs.
- + Provide learning environments that inspire creativity and collaboration among students.
- + Celebrate diversity and provide a sense of inclusion and belonging among students and families.

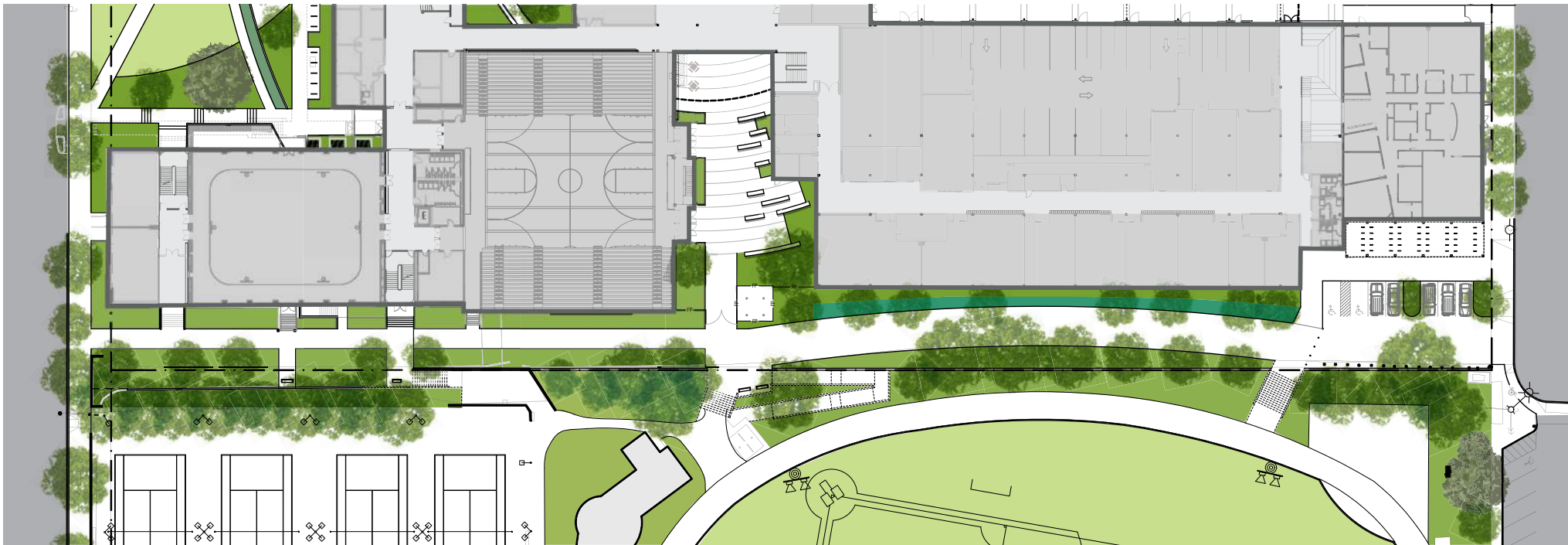


# SOUTH CAMPUS / PROGRAMMING

YOUR INPUT :: DAG #3

- + Strong concerns about loss of vehicular parking.
- + As a magnet school, not sure how many people would / could bike. Incentives? Support for bike parking to be covered and secured (fenced).
- + Strong support for new main entry at SE corner of gym
- + Strong support for the south courtyard to be a breakout space for events held in the gym.

- + Pedestrian connections need to be well lit - security
- + Strong support for (2) equally and adequately sized pedestrian connections to Buckman Park.
- + Strong support for seating on the Buckman Park hillside
- + Interest in providing a location for the student run food cart to support gym and park events.
- + Vegetation needs to be maintainable and low.
- + Concerns about health issues of occupying the space close to the radio tower.

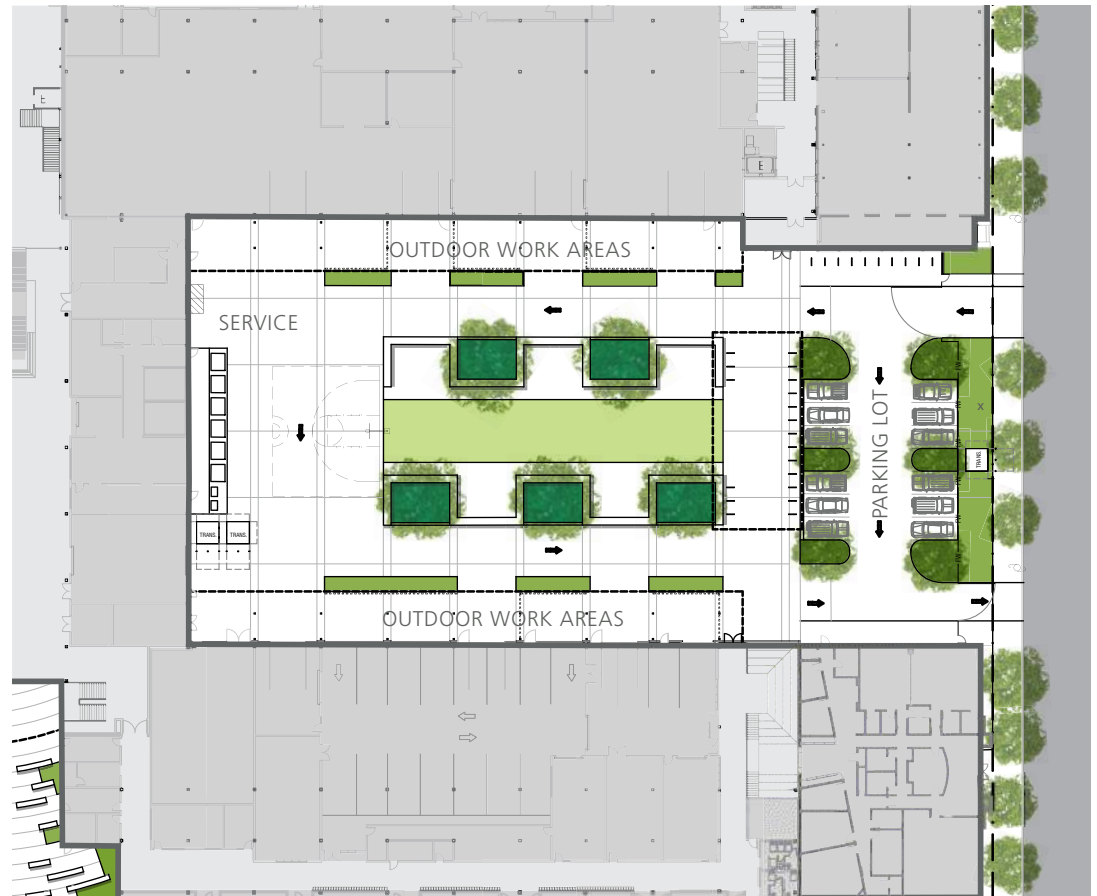




# EAST COURTYARD / GUIDING PRINCIPLES

## APPLICABLE GUIDING PRINCIPLES

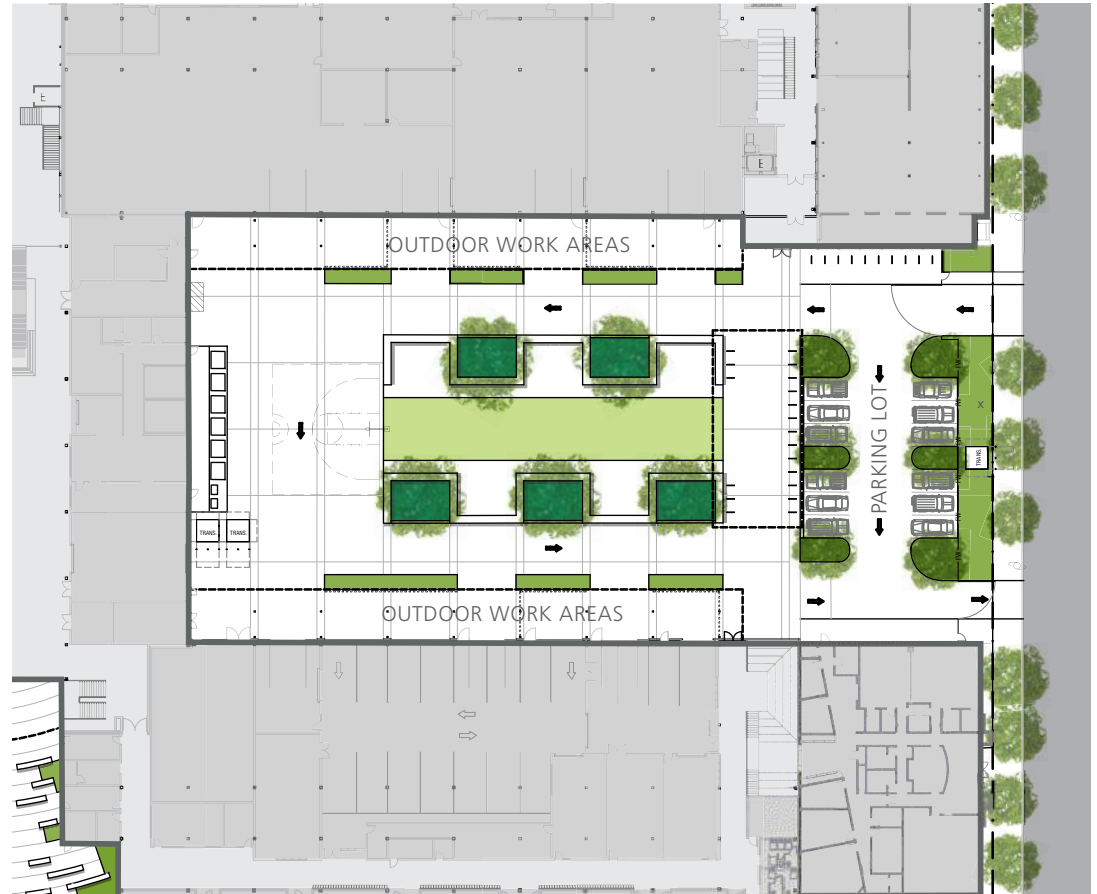
- + Honor the unique history and culture of Benson Polytechnic High School.
- + Engage with the local business, government, and post-secondary partners to create strong connections between education and industry.
- + Provide learning environments that inspire creativity and collaboration among students.
- + Provide agile, flexible, and adaptable facilities that support changing education and industry needs.
- + Provide hands-on, project-based learning opportunities that are imbued with rigor and relevancy.
- + Position Benson Polytechnic as the national model for steam and career technical education.
- + Provide learning environments that inspire creativity and collaboration among students.
- + Celebrate diversity and provide a sense of inclusion and belonging among students and families.



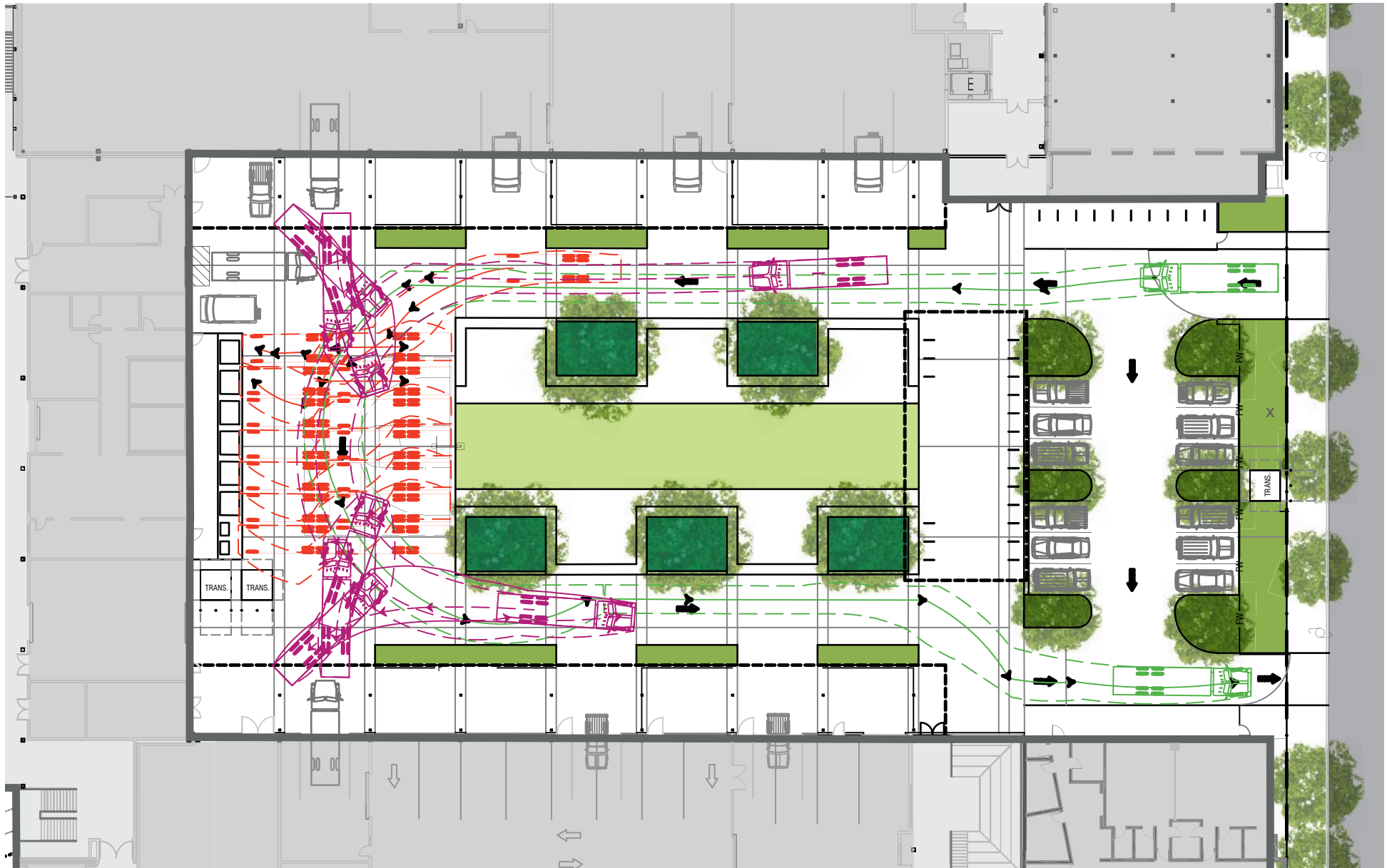
# EAST COURTYARD / PROGRAMMING

YOUR INPUT :: DAG #3

- + How can space be welcoming, not forbidding. It is the front door of BPHS to the surrounding neighborhood.
- + Needs to support the service, loading, drop-off requirements.
- + Needs to have outdoor work and storage space. Support for these areas to be covered and visually screened.
- + Support for a flexible design that allows for different types and sizes of events.
- + Who maintains the space, Grounds or Custodial?
- + What type of security is needed and where?
- + How should it be lit at night (events, safety)?



# EAST COURTYARD / PROGRAMMING - VEHICULAR REQUIREMENTS





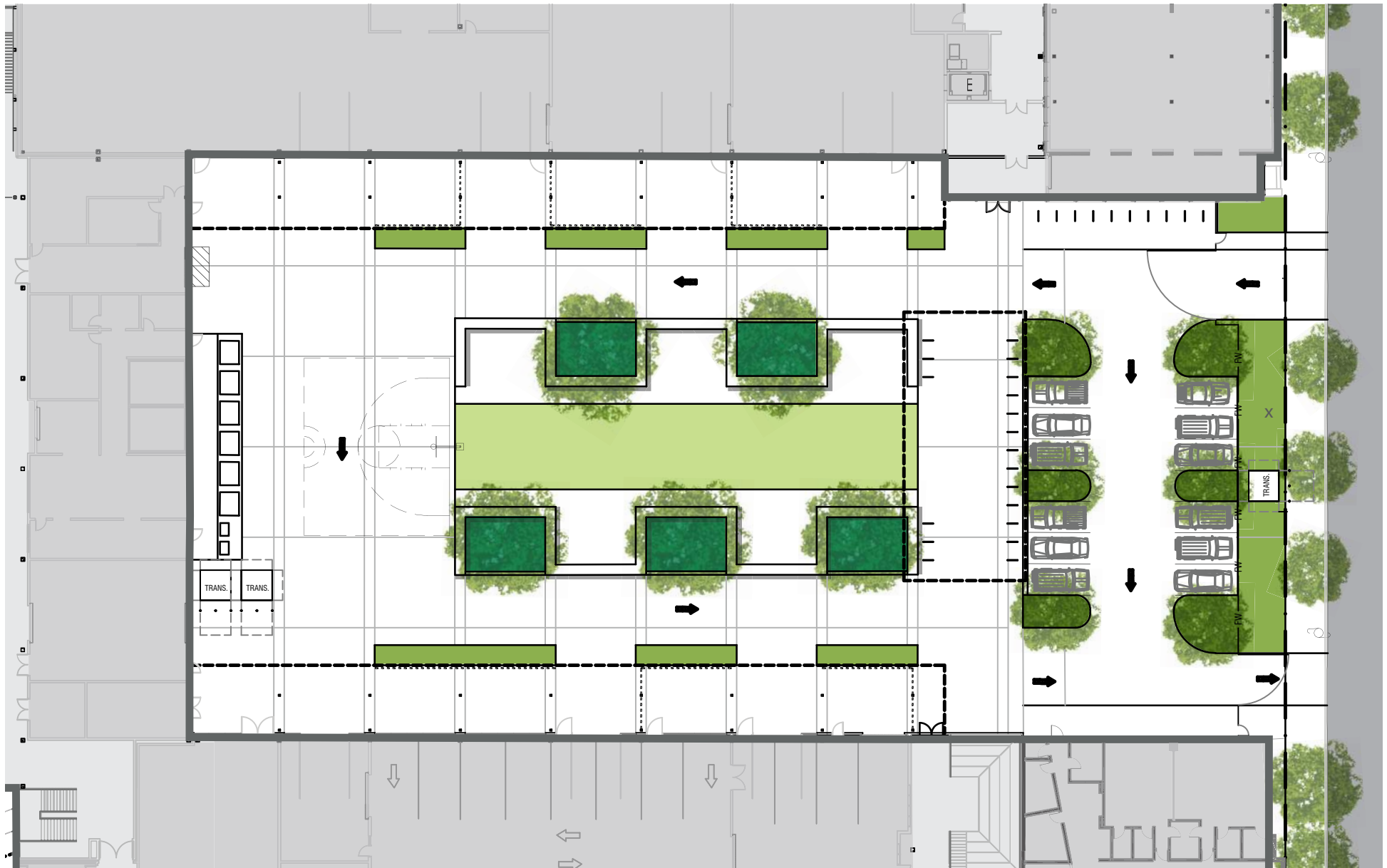
# EAST COURTYARD / PROGRAMMING

WORD OF THE DAY :: WOONERF

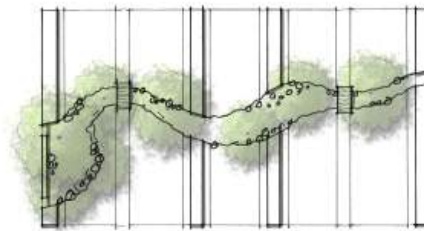
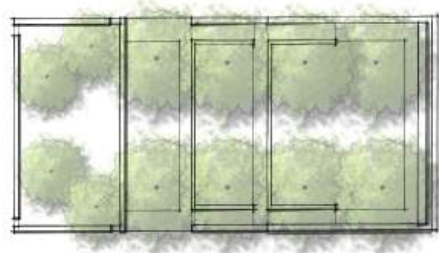
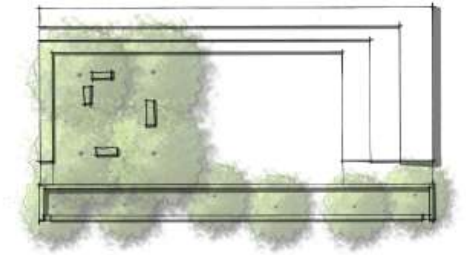
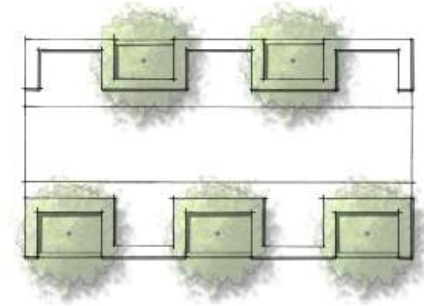
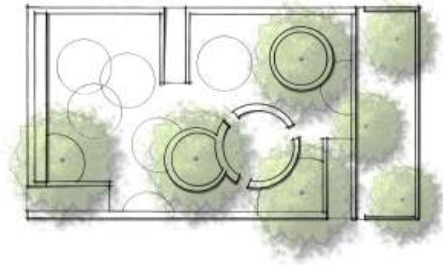
“A woonerf is a living street, as originally implemented in the Netherlands and in Flanders, the Dutch speaking northern portion of Belgium. Techniques include shared space, traffic calming and low speed limits.” Wikipedia



# EAST COURTYARD / PROGRAMMING



# EAST COURTYARD / PROGRAMMING



YOUR IDEA  
HERE



# PUBLIC COMMENT / 10 MINUTES

THANK YOU. / NEXT MEETING: APRIL 25 @ 6:00PM